

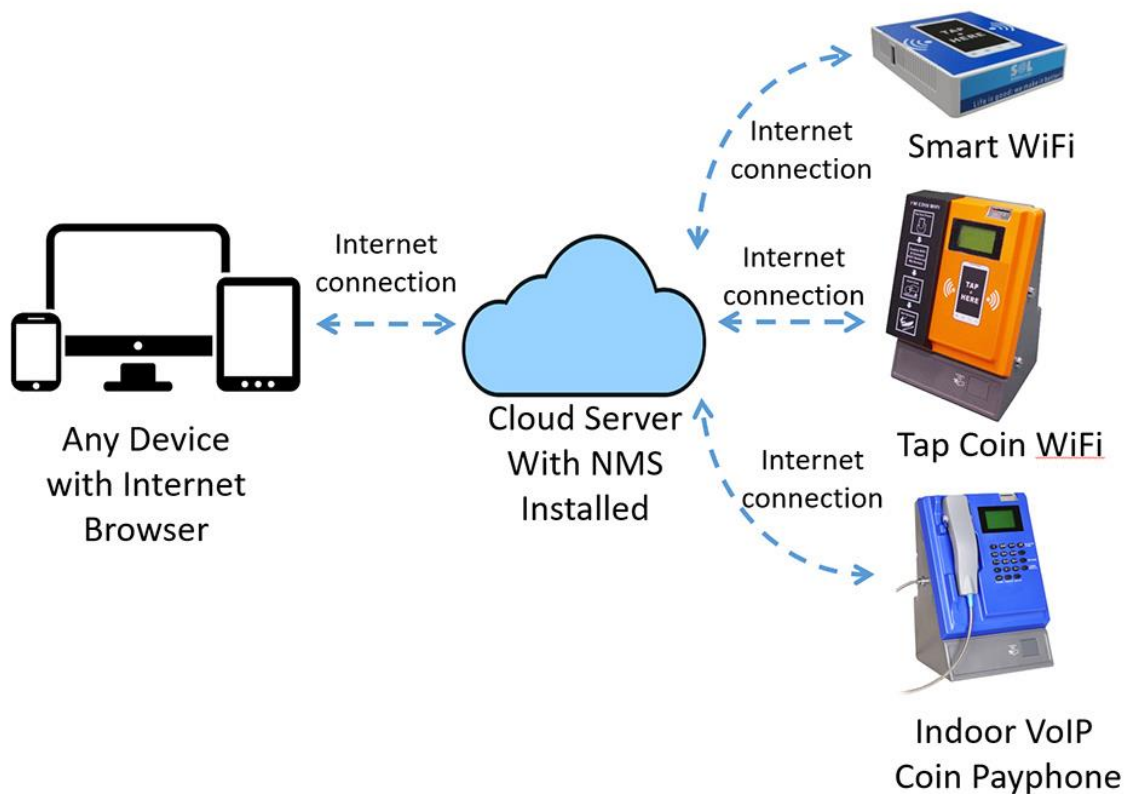
# Network Management System (NMS) Solution

## 1. WHAT IS NMS?

NMS (Network Management System) is a web-based remote management system to help you easily monitor and configure our WiFi Products (including Tap Coin WiFi, Indoor Coin WiFi, Smart WiFi, and VoIP Payphone).

## 2. HOW NMS WORKS?

Our cloud-version will perform data exchange with various kinds of terminals through the Internet. That means, once the terminal is online you can check its status and change its configuration in Internet browser of any device. And also, once the end user inserts coins to get WiFi service you can check the records.



### 3. WHAT NMS CAN DO

- ✓ Change SSID/WiFi Name:

**Modify Parameters**

Basic Parameters

WiFiSSID: ABC	WiFiFee: 100
WiFiTime: 60	RateLimit: 512k/2048k
IdleTimeout: 2m	userProfile: default

- ✓ Change WiFi Service Price (based on time or data usage):

**Modify Parameters**

Basic Parameters

WiFiSSID: DataVoice	WiFiFee: 100
WiFiTime: 50	RateLimit:
IdleTimeout: 2m	userProfile: default
ServiceType: 6	PrePay: 0
WiFiFrequency: 2412	WiFiKey:
WiFiKey: solution	WANIP:
WANMASK:	WANGATEWAY:
WANDNS:	SIMUsername1:
SIMPassword1:	SIMApn1:
SIMDialNumber1:	SIMUsername2:
SIMPassword2:	SIMApn2:
SIMDialNumber2:	PPPOEUsername:
PPPOEPassword:	MaxUsers:
WiFiByte: 50	

- ✓ Set Speed Limit for Each User to prevent network abuse:

**Modify Parameters**

Basic Parameters

WiFiSSID: DataVoice	WiFiFee: 100
WiFiTime: 50	RateLimit: 512k/2048k
IdleTimeout: 2m	userProfile: default

- ✓ Set Limit of Maximum Number of Online Users:

SIMPassword2 :	<input type="text"/>	SIMApn2 :	<input type="text"/>
SIMDialNumber2 :	<input type="text"/>	PPPOEUsername :	<input type="text"/>
PPPOEPassword :	<input type="text"/>	MaxUsers :	<input type="text"/>

- ✓ Check Coin Collection Records:

Terminal Information		Top-up Record <	
Device S/N:	<input type="text"/>	Username:	<input type="text"/>
Payment Method / Top-up Card PIN:	<input type="text"/>	Top-up Amount:	<input type="text"/>
Date of Recharge:	<input type="text" value="8/21/2016 09:53:08"/>	<input type="button" value="Search"/>	

Top-up Record List							Export to Excel
No.	Device S/N ↓	Username ↓	Owner ↓	Payment Method / Top-up Card PIN ↓	Top-up Amount ↓	Uptime / MBytes Limit ↓	Date of Recharge ↓
1	8600010149	24:0A:11:68:49:5D	SUPERIDEAS-DO	cash	500	30m	2016-08-31 09:35:58
2	8600010244	3C:43:8E:9A:9EA5	SUPERIDEAS-DO	cash	3500	3h30m	2016-08-31 08:40:05
3	8600010244	74:5C:9F:1F:6C:EB	SUPERIDEAS-DO	cash	1000	1h	2016-08-31 08:34:45
4	8600010149	58:F1:02:CA:5A:BF	SUPERIDEAS-DO	cash	1000	1h	2016-08-31 08:33:14
5	8600010244	64:89:9A:54:60:26	SUPERIDEAS-DO	cash	1000	1h	2016-08-31 08:23:29
6	8600010244	90:18:7C:84:57:44	SUPERIDEAS-DO	cash	1000	1h	2016-08-31 08:17:46
7	8600010149	58:F1:02:16:54:D8	SUPERIDEAS-DO	cash	500	30m	2016-08-31 08:11:28

- ✓ Check Internet Connection Status:

No.	Device S/N ↓	Operation	Status	Date Created ↓
1	42100002	Inquiry	Normal	2015-12-02 13:01:30
2	63000009	Inquiry	Normal	2015-12-02 13:01:02
3	66050001	Inquiry	Normal	2015-12-02 13:00:47
4	10002001	Inquiry	Normal	2015-12-02 13:00:38
5	63000007	Inquiry	Normal	2015-12-02 13:00:36
6	63060001	Inquiry	Normal	2015-12-02 13:00:35
7	8605000001	Inquiry	Normal	2015-12-02 13:00:27

- ✓ Change Call Tariff Rate (only for Payphone):

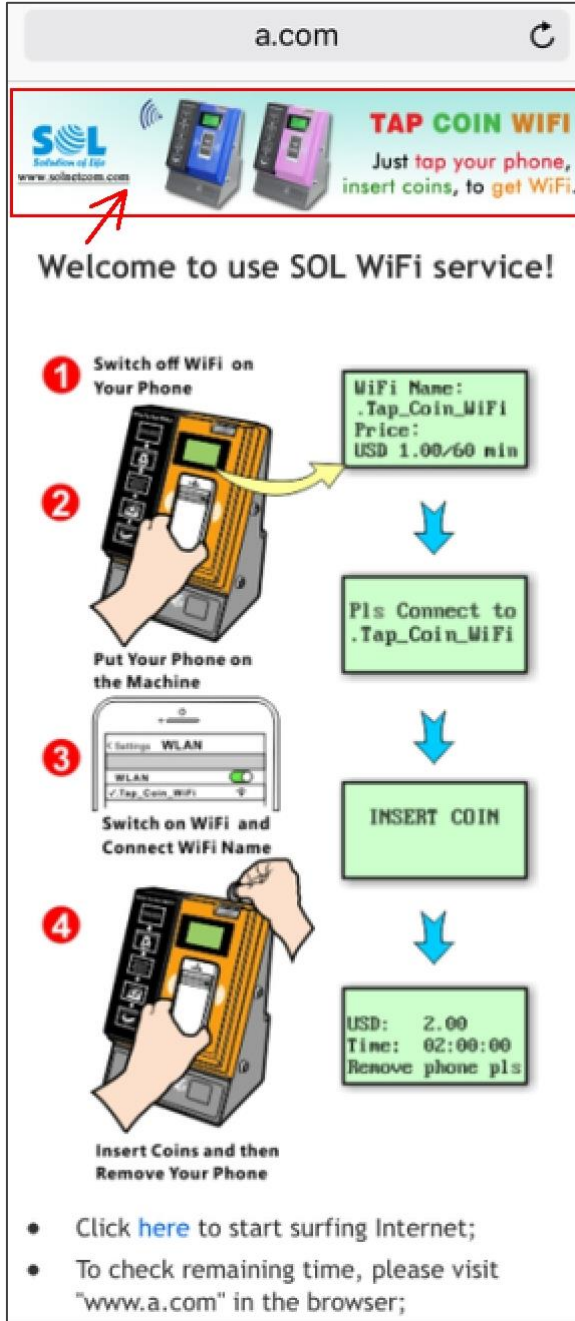
Tariff Data List					Add Tariff Data	Import from File
No.	Prefix of Phone Number ↓	Rate	Increment (sec)	Operation		
1	9	20	60	<a href="#">View</a> <a href="#">Modify</a> <a href="#">Delete</a>		
2	800	10	60	<a href="#">View</a> <a href="#">Modify</a> <a href="#">Delete</a>		
3	8	20	60	<a href="#">View</a> <a href="#">Modify</a> <a href="#">Delete</a>		
4	7	20	60	<a href="#">View</a> <a href="#">Modify</a> <a href="#">Delete</a>		
5	61	10	60	<a href="#">View</a> <a href="#">Modify</a> <a href="#">Delete</a>		

- ✓ Check Call Record (only for Payphone):

Call Record List								Export to Excel
No.	Caller Number ↓	Called Number ↓	PIN Code of Account Card ↓	Call Length (min) ↓	Call Fee ↓	Revenue ↓	Call Start Time ↓	Call End Time ↓
1	42100002	0944227727		55		20		2015-11-23 06:03:59
2	42100002	0910955188		27		20		2015-12-02 12:41:49
3	42100002	0902393086		35		20		2015-11-28 06:00:59
4	42100002	0940569852		47		20		2015-11-23 08:20:08
5	42100002	0417634929		42		20		2015-11-28 08:18:48

- ✓ Support account roaming (optional, additional cost required): with this feature, if the end user's device has connected Terminal A to get wifi service, then when he is in the signal range of Terminal B, his device can automatically connect to Terminal B without reconnection and/or payment.
- ✓ Support voucher system (optional, additional cost required): with this feature, you can generate and issue a list of voucher accounts for these end users: 1) that need to purchase the machine's WiFi service for a long period (for example, a month); 2) that need to use desktop PC to get the machine's WiFi service; 3) that need to use the machine's WiFi service for free (especially the owner or staff of the installation site).

- ✓ Support changing banner image on login page (optional, additional cost required): with this feature, you can upload new banner images (see the position indicated in the image below) to the machine. When an end user connects to the machine's SSID before inserting coins, or when his paid time comes to end, then the login page will automatically popup.



a.com

**TAP COIN WIFI**  
Just tap your phone,  
insert coins, to get WiFi.

www.sollectcom.com

Welcome to use SOL WiFi service!

- 1 Switch off WiFi on Your Phone
- 2 Put Your Phone on the Machine
- 3 Switch on WiFi and Connect WiFi Name
- 4 Insert Coins and then Remove Your Phone

WiFi Name:  
.Tap\_Coin\_WiFi  
Price:  
USD 1.00/60 min

Pls Connect to  
.Tap\_Coin\_WiFi

INSERT COIN

USD: 2.00  
Time: 02:00:00  
Remove phone pls

- Click [here](#) to start surfing Internet;
- To check remaining time, please visit "www.a.com" in the browser;